

# Opus



La collezione Opus è ispirata al coccio pesto, un agglomerato cementizio dell'epoca romana, un materiale antico reinterpretato dallo staff R&D di Ceramiche Piemme per creare una serie adatta a rispondere perfettamente alle esigenze dell'architettura contemporanea.

The Opus collection is inspired by Coccio Pesto, a cement agglomeration from the Roman era, an ancient material reinterpreted by Ceramiche Piemme R&D staff to create a series that perfectly meets the needs of contemporary architecture.

Die Inspiration der Opus - Serie ist „Coccio Pesto“, ein Zementagglomerat aus der Römerzeit, ein altes Material, das von den F&E-Mitarbeitern der Ceramiche Piemme neu interpretiert wurde, um eine Serie zu schaffen, die den Anforderungen der zeitgenössischen Architektur perfekt entspricht.

La collection Opus s'inspire de la terre cuite, un aggloméré de ciment de l'époque romaine, un matériau ancien réinterprété par l'équipe R&D de Ceramiche Piemme pour créer une série adaptée aux exigences de l'architecture contemporaine.

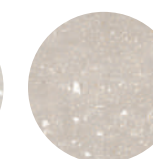
4

Colori  
Colours  
Farben  
Couleurs

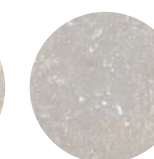
Opus Album



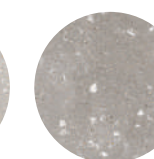
Opus Arena



Opus Cinis



Opus Griseo



3

Formati  
Sizes  
Formate  
Formats

120×120  
48"×48"



80×80  
31½"×31½"



60×60  
24"×24"



1

Spessore  
Thickness  
Stärke  
Epaisseur

±8,5

1

Superfici  
Surfaces  
Oberflächen  
Surfaces

Naturale

i

Effetto Cemento  
Cement Look  
Beton Optik  
Effet Béton

Rivestimento  
Wall Tiles  
Wandfliesen  
Revêtement

Pavimento  
Floor Tiles  
Bodenfliesen  
Sol

Gres fine porcellanato ad impasto colorato  
Coloured-body fine porcelain stoneware  
Feinsteinzeug aus farbiger Masse  
Grès cérame fin à pâte colorée

Tecnologia digitale  
Digital technology  
Digital technologie  
Technologie numérique





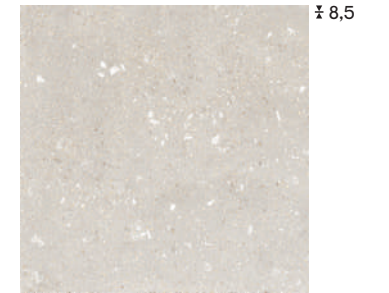
## Album



120×120  
05194A | Opus Album Nat/Ret



80×80  
05190 | Opus Album Nat/Ret



60×60  
05184 | Opus Album Nat/Ret



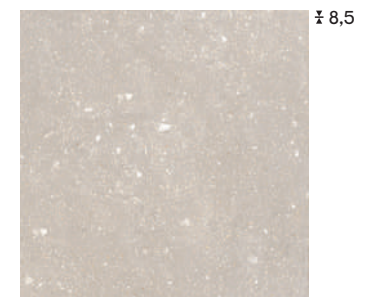
## Arena



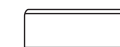
120×120  
05195A | Opus Arena Nat/Ret



80×80  
05191 | Opus Arena Nat/Ret



60×60  
05185 | Opus Arena Nat/Ret



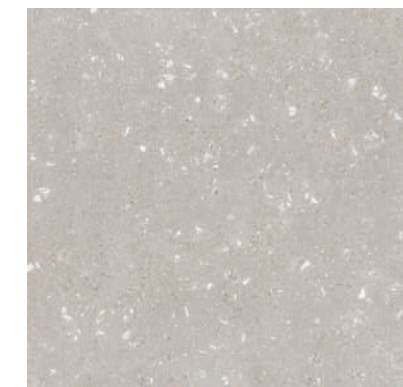




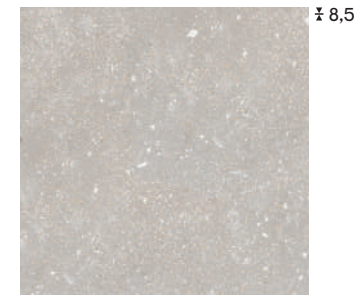
## Cinis



120x120  
05196A | Opus Cinis Nat/Ret



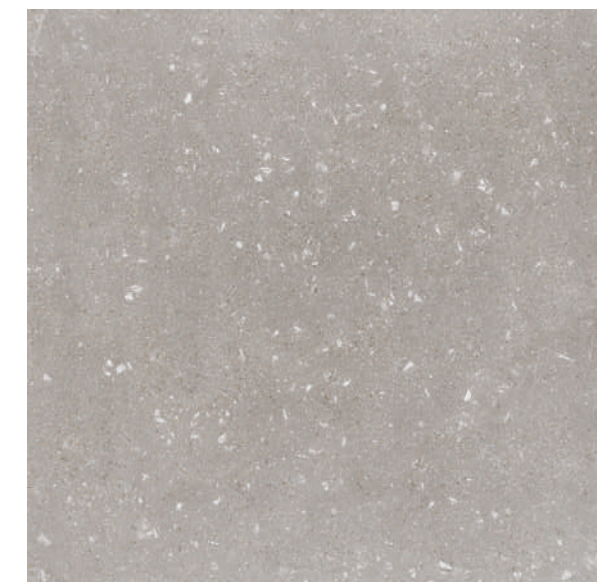
80x80  
05192 | Opus Cinis Nat/Ret



60x60  
05186 | Opus Cinis Nat/Ret



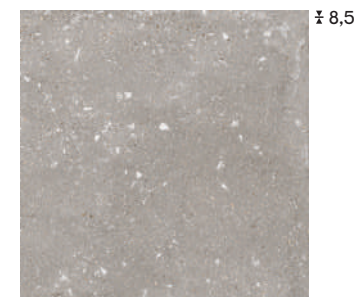
## Griseo



120x120  
05197A | Opus Griseo Nat/Ret



80x80  
05193 | Opus Griseo Nat/Ret



60x60  
05187 | Opus Griseo Nat/Ret







## Imballi

Packing  
Verpackung  
Emballage

Formati Sizes	± MM								
		Pezzi Scatola Pieces/Box Stck/Karton Carreaux/Boite	Mq/Scatola Sqmt/Box Qm/Karton M2/Boite	Kg/Scatola Kgs/Box Kg/Karton Kg/Boite	Scatole/Paletta Boxes/Pallet Karton/Palette Boite/Palette	Mq/Paletta Sqmt/Pallet Qm/Pallet M2/Palette	Kg/Paletta Kgs/Pallet Kg/Pallet Kg/Palette	Formato Paletta Size Pallet Format Pallet Dim. Palette	
120×120 (48"×48") Nat/Ret	P	8,5	2	2,88	55,00	24	69,12	1320	143x126x67
80×80 (31½"×31½") Nat/Ret	P	8,5	2	1,28	24,50	54	69,12	1323	122x80x96
60×60 (24"×24") Nat/Ret	P	8,5	4	1,44	26,00	40	57,60	1040	120x80x75
Pezzi Speciali / Special Pieces									
30×60 (12"×24") Step Nat/Ret	P	8,5	6	1,080	21,50	36	-	-	-
4,5×60 (1¾"×24") Battiscopa Nat/Ret	P	8,5	14	0,378	8,00	80	-	-	-

## Riepilogo Gamma

Collection  
Serie  
Gamme

Formati Sizes										Pezzi Speciali Special Pieces		
	120×120 - 48"×48"	80×80 - 31½"×31½"	60×60 - 24"×24"	DIN 51130	DIN 51097	DCOF	BS EN 7976-2	AS 4586 2013	Step 30×60 - 12"×24"	Battiscopa 4,5×60 - 1¾"×24"		
	± 8,5	± 8,5	± 8,5							± 8,5	± 8,5	
 Opus Album	Nat/Ret	05194A	05190	05184	V2	R10	A+B	>0.42	wet, dry >36	P3	05203	05198
 Opus Arena	Nat/Ret	05195A	05191	05185	V2	R10	A+B	>0.42	wet, dry >36	P3	05204	05199
 Opus Cinis	Nat/Ret	05196A	05192	05186	V2	R10	A+B	>0.42	wet, dry >36	P3	05205	05201
 Opus Griseo	Nat/Ret	05197A	05193	05187	V2	R10	A+B	>0.42	wet, dry >36	P3	05206	05202