



# PIGMENTO

# PIGMENTO

9 Colori / Colors

## COLORE COME ESSENZA DELLA MATERIA.

Ispirato alla resina cementizia spatolata a mano, Pigmento trova nella sensuale pastosità del colore la sua cifra espressiva. Materia che dà corpo a nuance uniche e irripetibili, compatte e insieme sfaccettate, resina significa anche superfici dalla plasticità ondulata e sinuosa, frutto di una gestualità sapiente e sempre nuova.

È dunque un insieme complesso di suggestioni cromatiche e materiche quello che dà vita a Pigmento: un progetto ultra-realistico e tecnicamente ineccepibile articolato in 9 colori disponibili sia in gres porcellanato a spessore tradizionale che in grandi lastre sottili. Una collezione che bilancia alla perfezione minimalismo e decorativismo, tra texture dalla marcata tridimensionalità e lastre effetto carta da parati. Qui, la matrice artistica dei soggetti è esaltata dalla forzatura delle proporzioni, fino a un fuori scala che – ancora una volta – fa emergere la vitalità del colore e l'espressività della materia.

## COLORE, FORMA, ATMOSFERA.

Con Pigmento, il colore entra in relazione con lo spazio abitato e con la sua luminosità attraverso una superficie morbida e opaca, disseminata di riflessi screziati. Uno spazio cromatico ampio e ben bilanciato, progettato per vestire ambienti residenziali e commerciali attraverso avvolgenti campiture monocromatiche o abbinamenti inediti e raffinati.

6,5 mm.

Naturale / Natural

9,5 mm.

SilkTech - SilkTech+

## COLOUR AS THE ESSENCE OF MATTER.

Inspired by hand-trowelled cement resin, Pigmento expresses its personality through the sensuality of dense colour. Matter that gives substance to unique, unrepeatable shades, compact and yet multi-faceted, resin takes the form of surfaces moulded into constantly new waves and corrugations by the skilled hands which applied them.

Pigmento is thus the outcome of a complex set of inputs of colour and substance: it is an ultra-realistic, technically impeccable project comprising 9 colours, available in both standard thickness porcelain stoneware and large slimline slabs. It is a collection that strikes a perfect balance between minimalism and a love of decoration, between sharply three-dimensional textures and wallpaper effect slabs. Here, the designs' artistic character is enhanced by the exaggerated proportions, right up to an oversize scale that once again reveals the vitality of the colour and the materials' expressive power.

## COLOUR, FORM, MOOD.

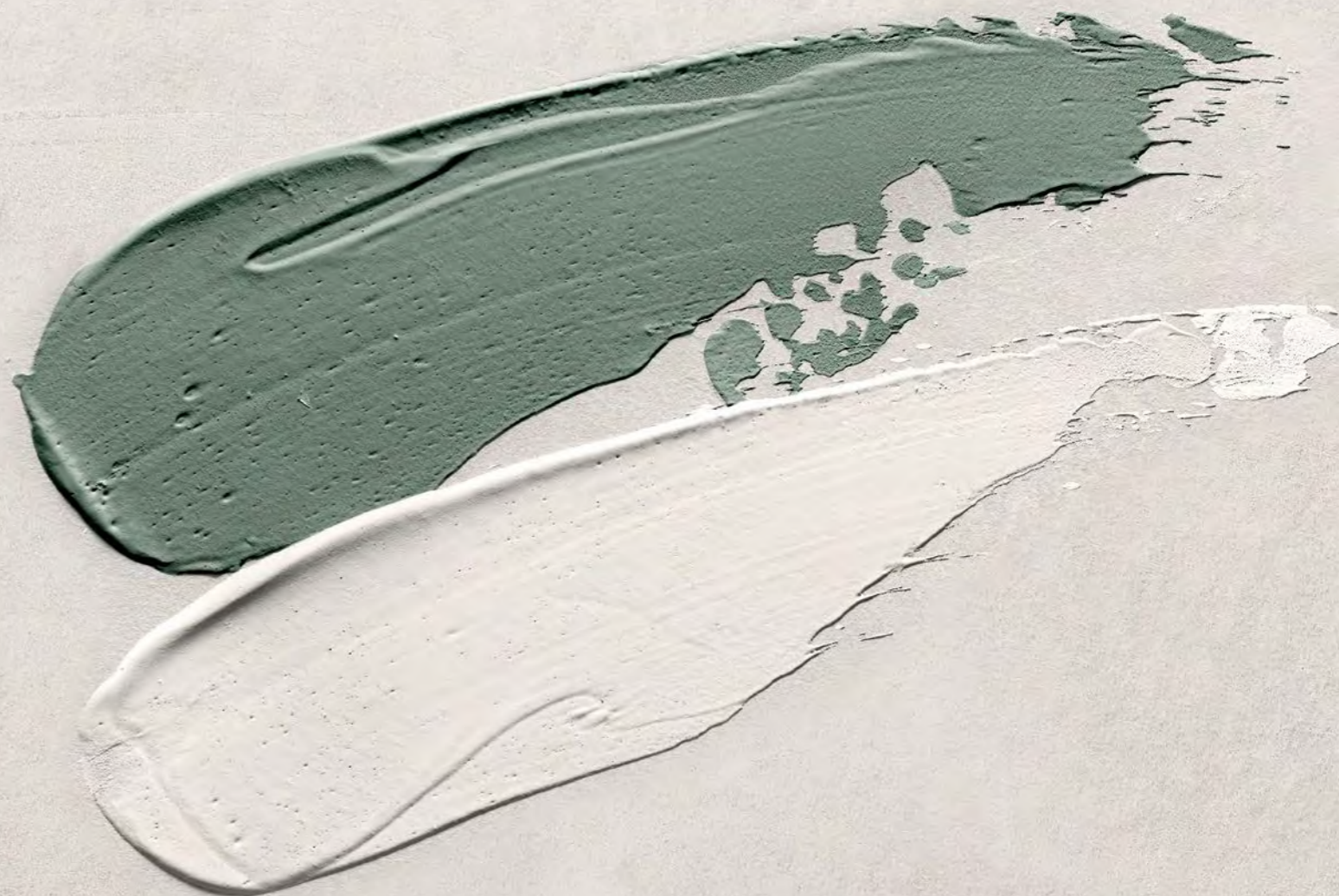
With Pigmento, colour interacts with home interiors and their intrinsic light via a soft, matt surface with scattered reflective streaks. A large, well balanced chromatic assortment, designed to cover residential and commercial interiors with thrilling expanses of single colour or unusual, refined combinations.



**PURA MATERIA CERAMICA,  
RICCA DI SUGGERZIONI  
VISIVE E TATTILI**

Ceramic tiles of great  
purity, with a rich visual  
and tactile beauty

Salvia - Perla





Floor Salvia Nat. Rett. 120x278 - 47 1/4" x 109 7/16"

Wall Peonia Nat. Rett. 120x278 - 47 1/4" x 109 7/16"  
Crema Nat. Rett. 120x278 - 47 1/4" x 109 7/16"



**Floor** Verde Salvia Nat. Rett. 120x278 - 47<sup>1</sup>/<sub>4</sub>"x109<sup>7</sup>/<sub>16</sub>"  
**Wall** Peonia Nat. Rett. 120x278 - 47<sup>1</sup>/<sub>4</sub>"x109<sup>7</sup>/<sub>16</sub>"





**Floor** Perla Silktech Rett. 120x120 - 47<sup>1/4</sup>"x47<sup>1/4</sup>"

**Wall** Grigio Cenere Nat. Rett. 120x278 - 47<sup>1/4</sup>"x109<sup>7/16</sup>"

**Furniture** Abacus Amaranto, Piombo Matt 7,5x20 - 2<sup>15/16</sup>"x7<sup>7/8</sup>"

Abacus Amaranto Plissé Lux 7,5x20 - 2<sup>15/16</sup>"x7<sup>7/8</sup>"

Grigio Cenere, Perla Nat. Rett. 120x278 - 47<sup>1/4</sup>"x109<sup>7/16</sup>"



**Floor** Perla Silktech Rett. 120x120 - 47<sup>1/4</sup>"x47<sup>1/4</sup>"

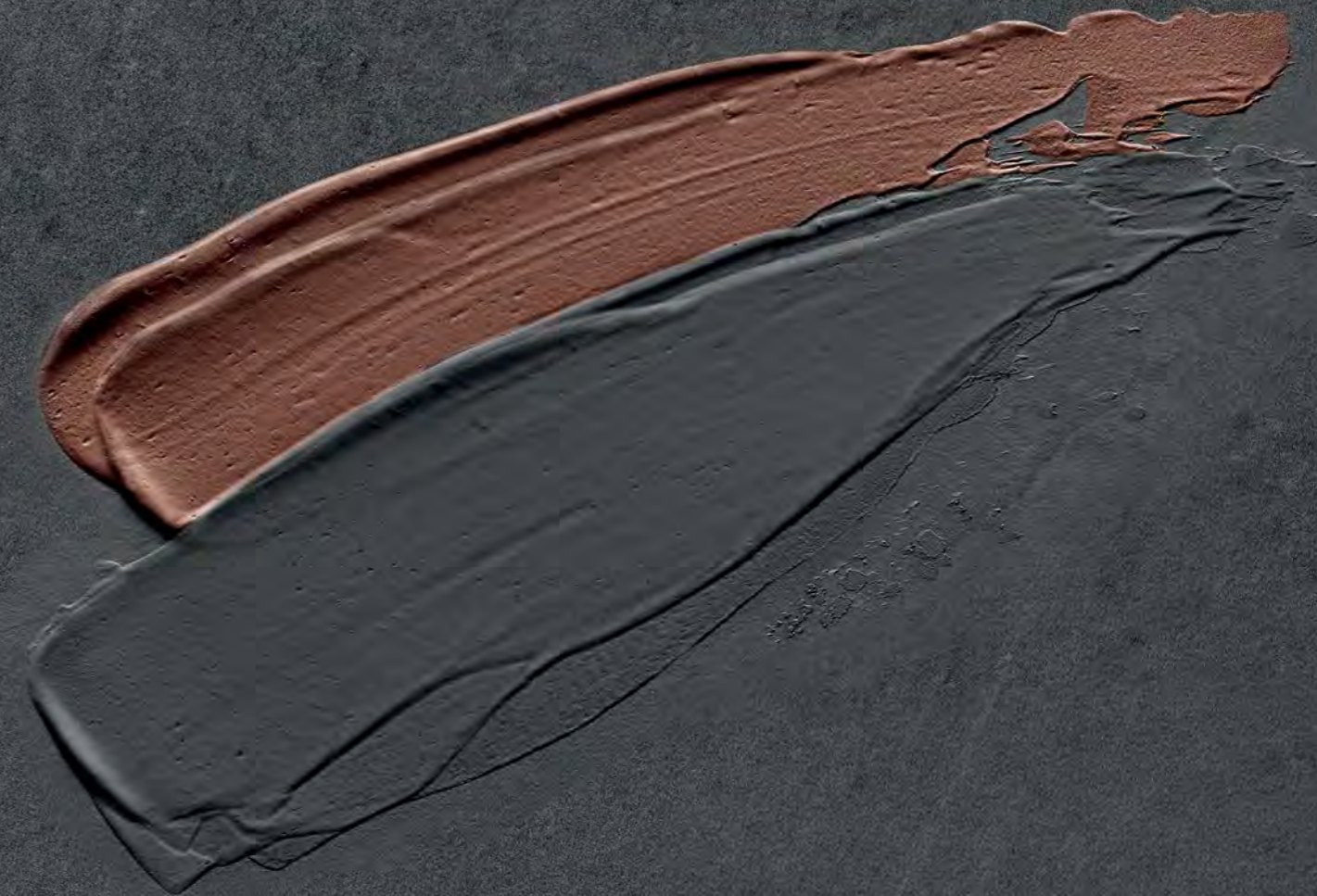
**Wall** Pop Art Nat. Rett. 120x278 - 47<sup>1/4</sup>"x109<sup>7/16</sup>" - Grigio Cenere Nat. Rett. 120x278 - 47<sup>1/4</sup>"x109<sup>7/16</sup>"

**Furniture** Abacus Piombo Matt 7,5x20 - 2<sup>15/16</sup>"x7<sup>7/8</sup>" - Abacus Amaranto Plissé Lux 7,5x20 - 2<sup>15/16</sup>"x7<sup>7/8</sup>"  
Amaranto Nat. Rett. 120x278 - 47<sup>1/4</sup>"x109<sup>7/16</sup>"

**UNA TEXTURE GRAFICA  
CHE NON FINISCE DI  
SORPRENDERE**

A graphic texture  
that never ceases  
to amaze

Amaranto - Antracite



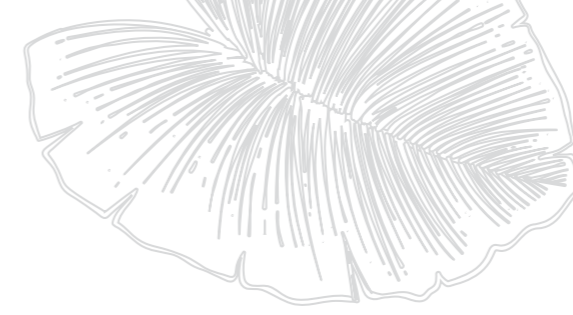




Floor Amaranto Nat. Rett. 120x278 - 47<sup>1/4</sup>"x109<sup>7/16</sup>"

Wall Eden Silktech Rett. 60x120 - 23<sup>5/8</sup>"x47<sup>1/4</sup>" - Abacus Amaranto Matt - Lux 7,5x20 - 2<sup>15/16</sup>"x7<sup>7/8</sup>"

Furniture Antracite, Grigio Cenere Nat. Rett. 120x278 - 47<sup>1/4</sup>"x109<sup>7/16</sup>"



**Floor** Amaranto Nat. Rett. 120x278 - 47<sup>1/4</sup>"x109<sup>7/16</sup>"  
**Wall** Eden Silktech Rett. 60x120 - 23<sup>5/8</sup>"x47<sup>1/4</sup>"  
**Furniture** Antracite, Grigio Cenere Nat. Rett. 120x278 - 47<sup>1/4</sup>"x109<sup>7/16</sup>"



Floor Antracite Nat. Rett. 120x278 - 47<sup>1</sup>/<sub>4</sub>"x109<sup>7</sup>/<sub>16</sub>"

Wall Carioca Nat. Rett. 120x278 - 47<sup>1</sup>/<sub>4</sub>"x109<sup>7</sup>/<sub>16</sub>"

Amaranto Nat. Rett. 120x278 - 47<sup>1</sup>/<sub>4</sub>"x109<sup>7</sup>/<sub>16</sub>"



**Floor** Antracite Nat. Rett. 120x278 - 47<sup>1/4</sup>"x109<sup>7/16</sup>"  
**Wall** Carioca Nat. Rett. 120x278 - 47<sup>1/4</sup>"x109<sup>7/16</sup>"

**UNA SUPERFICIE  
MORBIDA DAL CARATTERE  
FORTEMENTE MATERICO**

A soft surface  
with a strong  
material character

Grigio Basalto - Grigio Avio - Grigio Cenere





Floor Grigio Basalto Nat. Rett. 120x278 - 47<sup>1/4</sup>"x109<sup>7/16</sup>"

Wall Pop Art Nat. Rett. 120x278 - 47<sup>1/4</sup>"x109<sup>7/16</sup>"

Antracite Nat. Rett. 120x278 - 47<sup>1/4</sup>"x109<sup>7/16</sup>"



**Floor** Grigio Basalto Nat. Rett. 120x278 - 47<sup>1/4</sup>"x109<sup>7/16</sup>"  
**Wall** Pop Art Nat. Rett. 120x278 - 47<sup>1/4</sup>"x109<sup>7/16</sup>"



**Floor** Grigio Cenere Silktech Rett. 60x120 - 23<sup>5/8</sup>"x47<sup>1/4</sup>"

**Wall** Grigio Cenere Cardboard Silktech Rett. 60x120 - 23<sup>5/8</sup>"x47<sup>1/4</sup>"

Grigio Cenere Silktech Rett. 60x120 - 23<sup>5/8</sup>"x47<sup>1/4</sup>"

**Furniture** Abacus Petrolio Plissé Lux 7,5x20 - 2<sup>15/16</sup>"x7<sup>7/8</sup>"

Abacus Petrolio Matt - Lux 7,5x20 - 2<sup>15/16</sup>"x7<sup>7/8</sup>"

Grigio Cenere, Antracite Nat. Rett. 120x278 - 47<sup>1/4</sup>"x109<sup>7/16</sup>"





**Floor** Grigio Cenere Silktech Rett. 60x120 - 23<sup>5/8</sup>"x47<sup>1/4</sup>"

**Wall** Grigio Cenere Cardboard Silktech Rett. 60x120 - 23<sup>5/8</sup>"x47<sup>1/4</sup>"

**Furniture** Abacus Petrolio Plissé Lux 7,5x20 - 2<sup>15/16</sup>"x7<sup>7/8</sup>" - Grigio Cenere Nat. Rett. 120x278 - 47<sup>1/4</sup>"x109<sup>7/16</sup>"



**Floor** Grigio Avio Silktech Rett. 60x120 - 23<sup>5/8</sup>"x47<sup>1/4</sup>"  
**Wall** Eden Silktech Rett. 60x120 - 23<sup>5/8</sup>"x47<sup>1/4</sup>" - Grigio Avio Silktech Rett. 60x120 - 47<sup>1/4</sup>"x109<sup>7/16</sup>"  
**Furniture** Grigio Avio Nat. Rett. 120x278 - 23<sup>5/8</sup>"x47<sup>1/4</sup>"



**Floor** Grigio Avio Silktech Rett. 60x120 - 23<sup>5/8</sup>"x47<sup>1/4</sup>"

**Wall** Eden Silktech Rett. 60x120 - 23<sup>5/8</sup>"x47<sup>1/4</sup>"

**TENDENZE CROMATICHE  
CHE FONDONO  
SENSAZIONI ED EMOZIONI**

Enticing colour trends that  
speak to our emotions

Crema - Cappuccino





**Floor** Cappuccino Silktech Rett. 120x120 - 47<sup>1/4</sup>"x47<sup>1/4</sup>"

**Wall** Cappuccino Cardboard Silktech Rett. 60x120 - 23<sup>5/8</sup>"x47<sup>1/4</sup>"







**Floor** Crema Silktech Rett. 60x120 - 23<sup>5/8</sup>"x47<sup>1/4</sup>" - Crema Silktech Plus Rett. 60x120 - 23<sup>5/8</sup>"x47<sup>1/4</sup>"  
**Wall** Abacus Senape Plissé Lux 7,5x20 - 2<sup>15/16</sup>"x7<sup>7/8</sup>" - Amaranto, Cappuccino Nat. Rett. 120x278 - 47<sup>1/4</sup>"x109<sup>7/16</sup>"  
**Furniture** Crema, Amaranto Nat. Rett. 120x278 - 47<sup>1/4</sup>"x109<sup>7/16</sup>"





# PIGMENTO

- ANTRACITE 01
- GRIGIO BASALTO 02
- GRIGIO AVIO 03
- GRIGIO CENERE 04
- PERLA 05
- CREMA 06
- CAPPUCCINO 07
- VERDE SALVIA 08
- AMARANTO 09



# COLORI E DECORI

COLORS AND DECORS

CARDBOARD

EDEN



CARIOCA



PEONIA



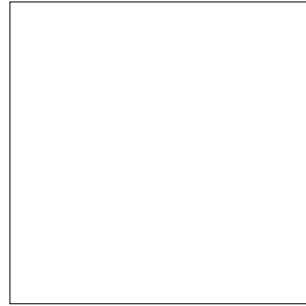
POP ART



# PIGMENTO 9,5 mm.

## COLORI E FORMATI

Colours and Sizes | Couleurs et Formats | Farben und Formate | Colores y Tamaños | Цвета и Форматы



120x120 - 47<sup>1/4</sup>"x47<sup>1/4</sup>"

**Silktech Rett.**

- ELNH Antracite ● T59
- ELNJ Grigio Basalto ● T59
- ELNK Grigio Cenere ● T59
- ELNL Perla ● T59
- ELNM Crema ● T59
- ELNN Cappuccino ● T59

7 Patterns



60x120 - 23<sup>5/8</sup>"x47<sup>1/4</sup>"

**Silktech Rett.**

- ELNQ Antracite ● T31
- ELNR Grigio Basalto ● T31
- ELNS Grigio Avio ● T31
- ELNT Grigio Cenere ● T31
- ELNU Perla ● T31
- ELNV Crema ● T31
- ELNW Cappuccino ● T31
- ELNX Verde Salvia ● T31
- ELNY Amaranato ● T31

Up to 14 Patterns

**Silktech Plus Rett. - R11**

- ELPT Antracite ● T31
- ELPU Grigio Basalto ● T31
- ELPV Grigio Cenere ● T31
- ELPW Perla ● T31
- ELPX Crema ● T31
- ELPY Cappuccino ● T31

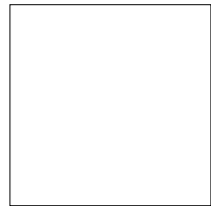


60x60 - 23<sup>5/8</sup>"x23<sup>5/8</sup>"

**Silktech Rett.**

- ELPD Antracite ● T17
- ELPE Grigio Basalto ● T17
- ELPF Grigio Cenere ● T17
- ELPG Perla ● T17
- ELPH Crema ● T17
- ELPJ Cappuccino ● T17

Up to 28 Patterns



80x80 - 31<sup>1/2</sup>"x31<sup>1/2</sup>"

**Silktech Rett.**

- EM5S Antracite ● T25
- EM5T Grigio Basalto ● T25
- EM5U Grigio Cenere ● T25
- EM5V Perla ● T25
- EM5W Crema ● T25
- EM5X Cappuccino ● T25



30x60 - 11<sup>13/16</sup>"x23<sup>5/8</sup>"

**Silktech Rett.**

- ELPL Antracite ● T14
- ELPM Grigio Basalto ● T14
- ELPN Grigio Cenere ● T14
- ELPP Perla ● T14
- ELPQ Crema ● T14
- ELPR Cappuccino ● T14

Up to 56 Patterns

### MOSAICO 5x5\*

Tessere - Chip 4,8x4,8 - 1<sup>7/8</sup>"x1<sup>7/8</sup>"




30x30 - 11<sup>13/16</sup>"x11<sup>13/16</sup>"

**Silktech**

- ELXV Antracite ● A86
- ELXW Grigio Basalto ● A86
- ELXX Grigio Avio ● A86
- ELXY Grigio Cenere ● A86
- ELXZ Perla ● A86
- ELY0 Crema ● A86
- ELY1 Cappuccino ● A86
- ELY2 Verde Salvia ● A86
- ELY3 Amaranato ● A86

## PEZZI SPECIALI

Trims | Pieces Speciales | Formteile | Piezas Especiales | Специальные Изделия

	Dimensione Size										Fascia di prezzo Price band
	<b>Silktech Rett.</b> 7x60 - 2 <sup>3/4</sup> "x23 <sup>5/8</sup> " Pcs. Box 15 - LM x Box 9,00	ELY6	ELY7	ELY8	ELY9	ELYA	ELYC	ELYD	ELYE	ELYF	● A11
Battiscopa - Skirting	<b>Silktech Rett.</b> 4,6x120 - 1 <sup>13/16</sup> "x47 <sup>1/4</sup> " Pcs. Box 6 - LM x Box 7,20	ELYH	ELYJ	ELYK	ELYL	ELYM	ELYN	ELYP	ELYQ	ELYR	● A28
	<b>Silktech Rett.</b> 33x120 - 12 <sup>15/16</sup> "x47 <sup>1/4</sup> " Pcs. Box 2 - LM x Box 2,40	ELYT	ELYS	ELYV	ELYW	ELYX	ELYY	ELYZ	ELZ0	ELZ1	● A82
Gradino - Stair Tread	<b>Silktech Rett.</b> 33x120x3,2x3,2 - 12 <sup>15/16</sup> "x47 <sup>1/4</sup> "x1 <sup>1/4</sup> "x1 <sup>1/4</sup> " Pcs. Box 2 - LM x Box 2,40	ELZ3	ELZ4	ELZ5	ELZ6	ELZ7	ELZ8	ELZ9	ELZA	ELZC	● A98
	<b>Silktech Rett.</b> 33x120x3,2x3,2 - 12 <sup>15/16</sup> "x47 <sup>1/4</sup> "x1 <sup>1/4</sup> "x1 <sup>1/4</sup> " Pcs. Box 2 - LM x Box 2,40	ELZ3	ELZ4	ELZ5	ELZ6	ELZ7	ELZ8	ELZ9	ELZA	ELZC	● A98
Gradone Naturale - Step	<b>Silktech Rett.</b> 33x120x3,2x3,2 - 12 <sup>15/16</sup> "x47 <sup>1/4</sup> "x1 <sup>1/4</sup> "x1 <sup>1/4</sup> " Pcs. Box 1 - LM x Box 1,20	Dx/Right ELZE	Dx/Right ELZF	Dx/Right ELZG	Dx/Right ELZH	Dx/Right ELZJ	Dx/Right ELZK	Dx/Right ELZL	Dx/Right ELZM	Dx/Right ELZN	● A104
Angolare Dx   Sx Corner Tile Right   Left	<b>Silktech Rett.</b> 33x120x3,2x3,2 - 12 <sup>15/16</sup> "x47 <sup>1/4</sup> "x1 <sup>1/4</sup> "x1 <sup>1/4</sup> " Pcs. Box 1 - LM x Box 1,20	Sx/Left ELZQ	Sx/Left ELZR	Sx/Left ELZS	Sx/Left ELZT	Sx/Left ELZU	Sx/Left ELZV	Sx/Left ELZW	Sx/Left ELZX	Sx/Left ELZY	

\* Su rete in fibra - On fibre mesh backing - Sur filet en fibre de verre - Auf Glasfasernetz - Sobre malla de fibra - На волоконной сетке

# PIGMENTO

## DECORI

Decors | Decors | Dekore | Decorados | Декоры

### EDEN



60x120 - 23<sup>5/8</sup>"x47<sup>1/4</sup>"

**Silktech Rett.**

EM2X Eden (3 patterns random) ● T44

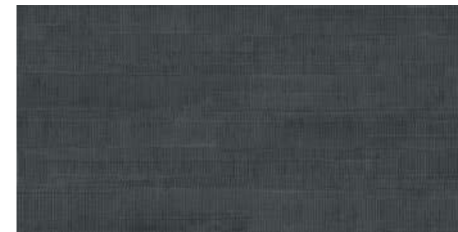
### POP ART



60x120 - 23<sup>5/8</sup>"x47<sup>1/4</sup>"

**Silktech Rett.**

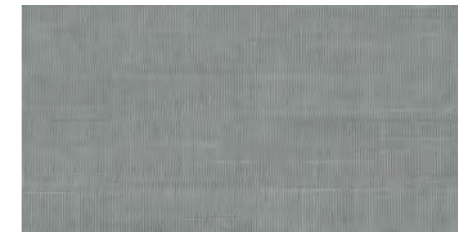
EMCR Pop Art (6 patterns random) ● T44



60x120 - 23<sup>5/8</sup>"x47<sup>1/4</sup>"

**Silktech Rett.**

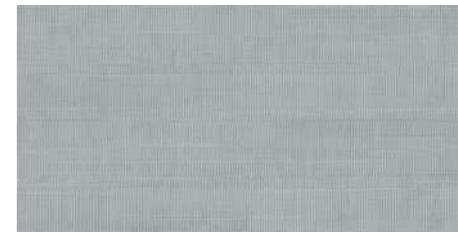
ELSD Antracite ● T37



60x120 - 23<sup>5/8</sup>"x47<sup>1/4</sup>"

**Silktech Rett.**

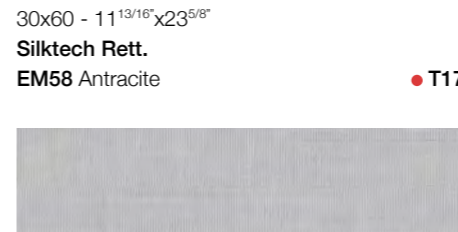
ELSE Grigio Basalto ● T37



60x120 - 23<sup>5/8</sup>"x47<sup>1/4</sup>"

**Silktech Rett.**

ELSF Grigio Avio ● T37



30x60 - 11<sup>13/16</sup>"x23<sup>5/8</sup>"

**Silktech Rett.**

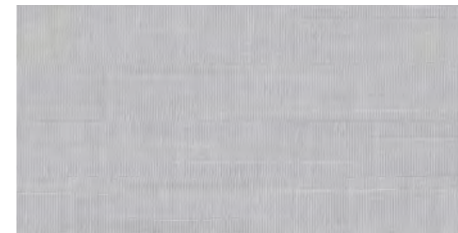
EM58 Antracite ● T17



30x60 - 11<sup>13/16</sup>"x23<sup>5/8</sup>"

**Silktech Rett.**

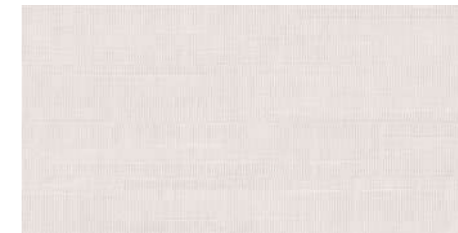
EM59 Grigio Basalto ● T17



60x120 - 23<sup>5/8</sup>"x47<sup>1/4</sup>"

**Silktech Rett.**

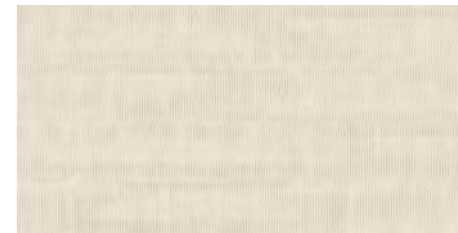
ELSG Grigio Cenere ● T37



60x120 - 23<sup>5/8</sup>"x47<sup>1/4</sup>"

**Silktech Rett.**

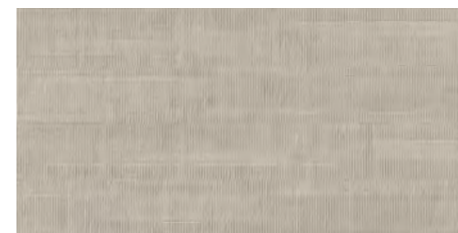
ELSH Perla ● T37



60x120 - 23<sup>5/8</sup>"x47<sup>1/4</sup>"

**Silktech Rett.**

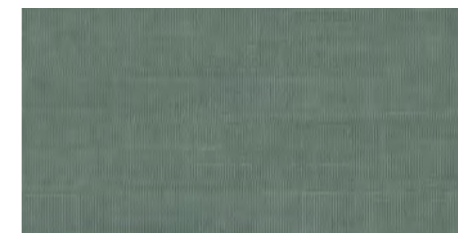
ELSJ Crema ● T37



60x120 - 23<sup>5/8</sup>"x47<sup>1/4</sup>"

**Silktech Rett.**

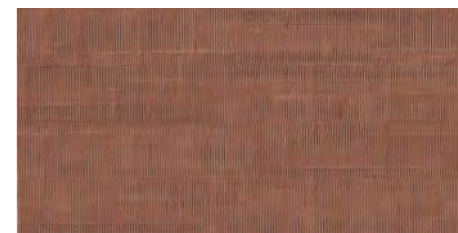
ELSK Cappuccino ● T37



60x120 - 23<sup>5/8</sup>"x47<sup>1/4</sup>"

**Silktech Rett.**

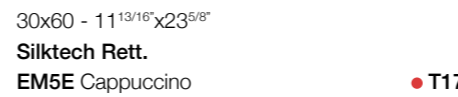
ELSL Verde Salvia ● T37



60x120 - 23<sup>5/8</sup>"x47<sup>1/4</sup>"

**Silktech Rett.**

ELSM Amaranato ● T37



30x60 - 11<sup>13/16</sup>"x23<sup>5/8</sup>"

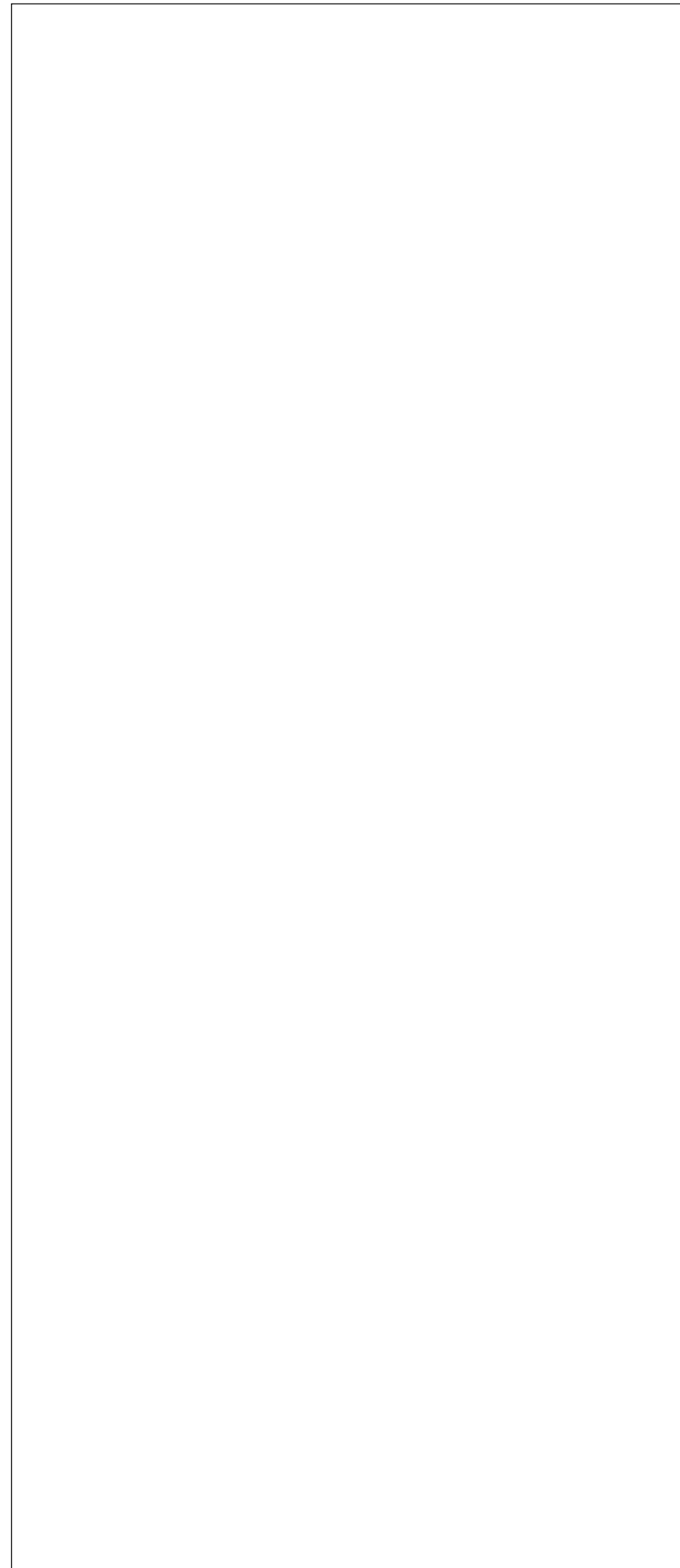
**Silktech Rett.**

EM5E Cappuccino ● T17

# PIGMENTO

**COLORI E FORMATI 120x278** - 47<sup>1/4</sup>"x109<sup>7/16</sup>"

Colours and Sizes | Couleurs et Formats | Farben und Formate | Colores y Tamaños | Цвета и Форматы



**ELN6 Antracite** ● T99  
5 Patterns

**ELN7 Grigio Basalto** ● T99  
5 Patterns

**ELN8 Grigio Avio** ● T99  
5 Patterns

**ELN9 Grigio Cenere** ● T99  
5 Patterns

**ELNA Perla** ● T99  
5 Patterns

**ELNC Crema** ● T99  
5 Patterns

**ELND Cappuccino** ● T99  
5 Patterns

**ELNE Verde Salvia** ● T99  
5 Patterns

**ELNF Amaranato** ● T99  
5 Patterns

120x278 - 47<sup>1/4</sup>"x109<sup>7/16</sup>"

**Naturale Rett.**

5 Patterns

 6,5 mm.

**DECORI 120x278** - 47<sup>1/4</sup>"x109<sup>7/16</sup>"

Decors | Decors | Dekore | Decorados | Декоры

**CARIOCA**



120x278 - 47<sup>1/4</sup>"x109<sup>7/16</sup>"

**Naturale Rett.**

**ELSS Carioca A**

● T109



120x278 - 47<sup>1/4</sup>"x109<sup>7/16</sup>"

**Naturale Rett.**

**ELU5 Carioca B**

● T109

# PIGMENTO 6,5 mm.

DECORI 120x278 - 47<sup>1/4</sup>"x109<sup>7/16</sup>"

Decors | Decors | Dekore | Decorados | Декоры

PEONIA



120x278 - 47<sup>1/4</sup>"x109<sup>7/16</sup>"

Naturale Rett.

ELSQ Peonia A

● T109

120x278 - 47<sup>1/4</sup>"x109<sup>7/16</sup>"

Naturale Rett.

ELU4 Peonia B

● T109

 6,5 mm.

DECORI 120x278 - 47<sup>1/4</sup>"x109<sup>7/16</sup>"

Decors | Decors | Dekore | Decorados | Декоры

POP ART



120x278 - 47<sup>1/4</sup>"x109<sup>7/16</sup>"

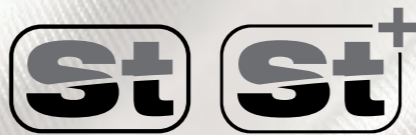
Naturale Rett.

ELSR Pop Art (2 patterns random)

● T109

# SILKtech

# SILKtech<sup>+</sup>



La tecnologia SilkTech combina prestazioni antiscivolo elevate e una superficie ceramica setosa al tatto.

Dalla continua ricerca dei laboratori R&D Emilgroup è nata **SilkTech**, una **innovativa tecnologia che aumenta il coefficiente di attrito del gres porcellanato, mantenendo un'incredibile morbidezza superficiale**. Il risultato è un prodotto che assicura una performance tecnica superiore in termini di **sicurezza, piacevolezza tattile, facilità di pulizia e resistenza nel tempo**.

Formulazioni di prodotto diverse permettono di raggiungere valori di scivolosità differenti, secondo i principali standard internazionali:

**SilkTech:** R10 (DIN51130) // B (A+B) (DIN51097) // PTV>36 (BS7976) // P3 (AS4586) // classe 2 (41901)

**SilkTech+:** R11 (DIN51130) // C (A+B+C) (DIN51097) // PTV>36 (BS7976) // P4 (AS4586) // classe 3 (41901)

Il processo della tecnologia SilkTech rende le **caratteristiche** di morbidezza e resistenza allo scivolamento **parti integranti della materia**. L'assenza di trattamenti superficiali assicura il mantenimento dell'effetto antislip per **l'intero ciclo di vita del prodotto** e la superficie soffice e vellutata favorisce una **straordinaria facilità di manutenzione e pulizia**.

Una rivoluzione ottenuta innovando tutte le fasi industriali, dalla formulazione della materia alla cottura finale.

SilkTech diventa quindi la soluzione più adatta sia in **spazi residenziali**, grazie alla piacevolezza al tatto, sia in **ambienti pubblici**, grazie all'effetto antislip elevato. L'incredibile **versatilità** rende SilkTech un prezioso alleato anche per la progettazione di spazi dove risulti necessaria una **continuità architettonica tra interno ed esterno**.

Le collezioni realizzate con l'applicazione della tecnologia SilkTech consentono di rispondere al bisogno di **prestazioni sempre più elevate** richieste dal mercato, assicurando la possibilità di definire progetti architettonici complessi, **coniugando alte performance tecniche, design estetico Made in Italy ed estrema piacevolezza tattile**.

**La tecnologia SilkTech accorde una forte antiglissance avec une surface céramique soyeuse au toucher.**

La recherche incessante des laboratoires R&D Emilgroup a abouti à SilkTech, une technologie révolutionnaire qui augmente le coefficient de frottement du grès cérame, tout en conservant une incroyable douceur en surface. Le résultat est un produit garantissant une performance technique supérieure en termes de sécurité, de douceur tactile, de facilité d'entretien et de résistance à long terme.

Les différentes formulations de produit ont différentes valeurs de glissance, selon les principales normes internationales :

**SilkTech:** R10 (DIN51130) // B (A+B) (DIN51097) // PTV>36 (BS7976)

// P3 (AS4586) // classe 2 (41901)

**SilkTech+:** R11 (DIN51130) // C (A+B+C) (DIN51097) // PTV>36 (BS7976) //

P4 (AS4586) // classe 3 (41901)

SilkTech est une technologie qui rend les caractéristiques de douceur et de résistance à la glissance parties intégrantes de la matière. L'absence de traitements superficiels assure le maintien de l'effet antidérapant pendant tout le cycle de vie du produit, et la surface douce et veloutée apporte une extraordinaire facilité d'entretien et de nettoyage.

Une révolution obtenue en innovant toutes les phases industrielles, de la formulation de la matière à la cuisson finale.

SilkTech devient ainsi la meilleure solution dans les espaces résidentiels, en raison de sa grande douceur au toucher, comme dans les lieux publics en raison de son excellente valeur d'antiglissance. L'étonnante souplesse d'emploi fait de SilkTech un précieux allié aussi pour concevoir les espaces exigeant une continuité architecturale entre intérieur et extérieur.

Les collections basées sur la technologie SilkTech permettent de répondre à la demande du marché qui a besoin de performances de plus en plus élevées pour réaliser des projets complexes d'architecture en conciliant hautes performances techniques, esthétique Made in Italy et douceur extrême au toucher.

**Die SilkTech-Technologie verbindet hohe Rutschhemmung mit seidiger Haptik der keramischen Oberfläche.**

Der kontinuierlichen Forschungsarbeit der R&D-Labors von Emilgroup verdankt sich SilkTech, eine innovative Technologie, die den Reibungskoeffizienten von Feinsteinzeug erhöht und dabei gleichzeitig die unglaublich weiche Haptik der Oberflächen beibehält. Das mit SilkTech veredelte Produkt bietet überlegene Leistungsmerkmale in puncto Sicherheit, angenehme Haptik, Pflegeleichtigkeit und Langlebigkeit.

Unterschiedliche Produktausführungen ermöglichen verschiedene Rutschhemmungen gemäß den internationalen Standards:

**SilkTech:** R10 (DIN51130) // B (A+B) (DIN51097) // PTV>36 (BS7976)

// P3 (AS4586) // Klasse 2 (41901)

**SilkTech+:** R11 (DIN51130) // C (A+B+C) (DIN51097) // PTV>36 (BS7976) //

P4 (AS4586) // Klasse 3 (41901)

Die SilkTech-Veredelung lässt die weiche, rutschhemmende Oberflächenbeschaffenheit zu einem festen Bestandteil des Materials werden. Da die Oberfläche nicht behandelt wird, hält die rutschhemmende Wirkung über den gesamten Produktlebenszyklus an. Die samtig weiche Haptik macht das Produkt außerordentlich pflegeleicht.

Die bahnbrechende Entwicklung umfasst alle Herstellungsphasen von der Materialrezeptur bis hin zum letzten Brennvorgang.

SilkTech ist daher die ideale Lösung nicht nur für den Wohnungsbaubereich – dank der angenehmen Haptik – sondern auch für öffentliche Bereiche, wo die besonders hohe Rutschhemmung von Vorteil ist. Ihre unglaubliche Vielseitigkeit macht SilkTech auch bei der Planung von Räumen, die eine durchgängige Optik von Innen- und Außenbereichen erfordern, zu einem wertvollen Verbündeten.

Die mit SilkTech-Technologie hergestellten Kollektionen werden den steigenden Leistungsanforderungen des Marktes gerecht und ermöglichen die Planung komplexer Architekturprojekte, da sie hohe technische Leistungsmerkmale mit ästhetischem Design Made in Italy und außerordentlich attraktiver Haptik kombinieren.

**The SilkTech technology combines excellent anti-slip performances with a ceramic surface that's silky to the touch.**

The ceaseless research of the Emilgroup R&D laboratories now gives us SilkTech, an innovative technology that increases the friction coefficient of porcelain stoneware, while retaining an incredibly soft-feeling surface. The result is a product that guarantees superior technical performance in terms of safety, tactile appeal, ease of cleaning and durability over time.

Different product formulations enable different anti-slip resistance values, in accordance with the main international standards:

**SilkTech:** R10 (DIN51130) // B (A+B) (DIN51097) // PTV>36 (BS7976) // P3 (AS4586) // class 2 (41901)

**SilkTech+:** R11 (DIN51130) // C (A+B+C) (DIN51097) // PTV>36 (BS7976) // P4 (AS4586) // class 3 (41901)

The SilkTech technology process makes softness and skid resistance **characteristics an integral part of the material**. Since no surface treatments are involved, the anti-slip effect is maintained **throughout the product's life cycle** and the soft, velvety surface facilitates **amazingly easy cleaning and care**.

A revolution achieved by innovating all industrial phases, from the material's formulation through to final firing.

SilkTech is thus the ideal solution both in **residential areas**, thanks to its pleasant "feel", and in **public locations**, due to its excellent anti-slip properties. Incredibly **versatile**, SilkTech is also an invaluable aid when designing spaces that require **architectural continuity between indoors and outdoors**.

Collections manufactured with the SilkTech technology meet the market's demands for **better and better performances** and are the basis for complex architectural projects, combining **outstanding technical performances, stunning Italian design and a surface exceptionally pleasant to the touch**.

**La tecnología SilkTech combina unas elevadas prestaciones antideslizantes y una superficie cerámica sedosa al tacto.**

Gracias a la continua investigación de los laboratorios R&D Emilgroup ha nacido SilkTech, una innovadora tecnología que aumenta el coeficiente de fricción del gres porcelánico, manteniendo una increíble suavidad superficial. El resultado es un producto que brinda un rendimiento técnico superior, pues es seguro, agradable al tacto, fácil de limpiar y duradero.

Formulaciones de producto diversas permitirán grados de deslizamiento diferentes, de acuerdo con los principales estándares internacionales:

**SilkTech:** R10 (DIN51130) // B (A+B) (DIN51097) // PTV>36 (BS7976)

// P3 (AS4586) // clase 2 (41901)

**SilkTech+:** R11 (DIN51130) // C (A+B+C) (DIN51097) // PTV>36 (BS7976) //

P4 (AS4586) // clase 3 (41901)

El proceso de la tecnología SilkTech hace que las características de suavidad y resistencia al deslizamiento formen parte integrante del material. La inexistencia de tratamientos superficiales asegura el mantenimiento del efecto antideslizante a lo largo de todo el ciclo de vida del producto; además, la superficie suave y sedosa propicia una extraordinaria facilidad de mantenimiento y de limpieza.

Una revolución fruto de la innovación aplicada a todas las fases industriales, desde la formulación del material hasta la cocción final.

SilkTech, de este modo, se convierte en la solución idónea tanto para ámbitos residenciales, gracias a lo agradable de su tacto, como para espacios públicos, gracias a sus magníficas propiedades antideslizantes. La increíble versatilidad de SilkTech lo convierte asimismo en un valioso aliado para la proyección de espacios en los que resulte necesario mantener cierta continuidad arquitectónica entre interior y exterior.

Las colecciones realizadas aplicando la tecnología SilkTech permiten responder a la necesidad de contar con unas prestaciones cada vez más elevadas, según exige el mercado, asegurando la factibilidad de proyectos arquitectónicos complejos que requieran conjugar unas altas prestaciones técnicas, un diseño estético Made in Italy y unas superficies extraordinariamente agradables al tacto.

**Технология SilkTech позволяет получать высокие характеристики нескользкости и шелковистую на ощупь керамическую поверхность.**

Благодаря непрерывным изысканиям исследовательских лабораторий Emilgroup появилась на свет SilkTech - инновационная технология, повышающая коэффициент трения керамогранита, сохраняя невероятную мягкость поверхности. Результат - изделие с высочайшими техническими характеристиками безопасности, тактильной приятностью, простотой чистки и долговечностью.

Разные составы смеси изделия позволяют добиться различных коэффициентов трения в соответствии с основными международными стандартами:

**SilkTech:** R10 (DIN51130) // B (A+B) (DIN51097) // PTV>36 (BS7976)

// P3 (AS4586) // класс 2 (41901)

**SilkTech+:** R11 (DIN51130) // C (A+B+C) (DIN51097) // PTV>36 (BS7976)

// P4 (AS4586) // класс 3 (41901)

Технологический процесс SilkTech превращает характеристики мягкости и сопротивления скольжению в неотъемлемые свойства этого материала. Отсутствие обработки поверхности гарантирует сохранение эффекта нескользкости в течение всего жизненного цикла продукции, а мягкая и шелковистая поверхность обеспечивает удивительную легкость ухода и чистки.

Это революционное достижение обеспечивается инновациями на всех этапах производственного процесса - от разработки состава материала до окончательного обжига.

Таким образом, SilkTech превращается в наиболее удачное решение как для жилых пространств благодаря мягкости на ощупь, так и для общественных объектов благодаря высокой нескользкости. Невероятная универсальность превращает SilkTech в ценное средство при проектировании таких объектов, в которых необходима архитектурная сочетаемость внутренних и наружных пространств.

Коллекции, созданные с использованием технологии SilkTech, позволяют отвечать на требования все более высоких характеристик, запрашиваемых рынком, гарантируя возможность реализации сложных архитектурных проектов, сочетающих в себе высокие технические характеристики, дизайн эстетики Made in Italy и очень приятные тактильные ощущения.







<b>Ergon is a brand of Emilceramica S.r.l. a socio unico</b>	<b>Sede Commerciale/ Amministrativa</b>
<a href="http://emilgroup.it/ergon">emilgroup.it/ergon</a> <a href="http://emilgroup.it">emilgroup.it</a>	Via Ghiarola Nuova, 29 - 41042 Fiorano Modenese (Mo) Italy T +39 0536 835111 - <a href="mailto:info@emilceramicagroup.it">info@emilceramicagroup.it</a>